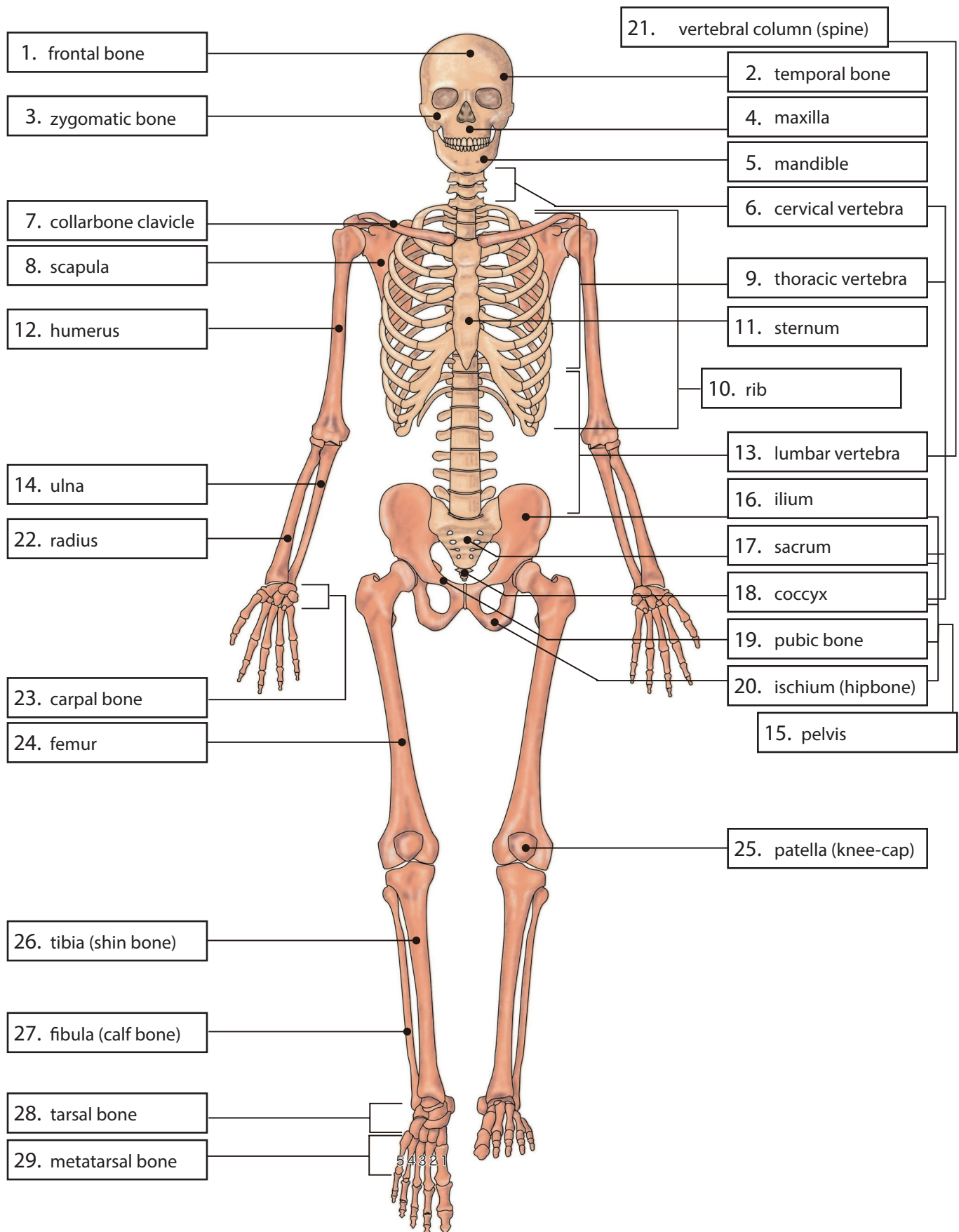
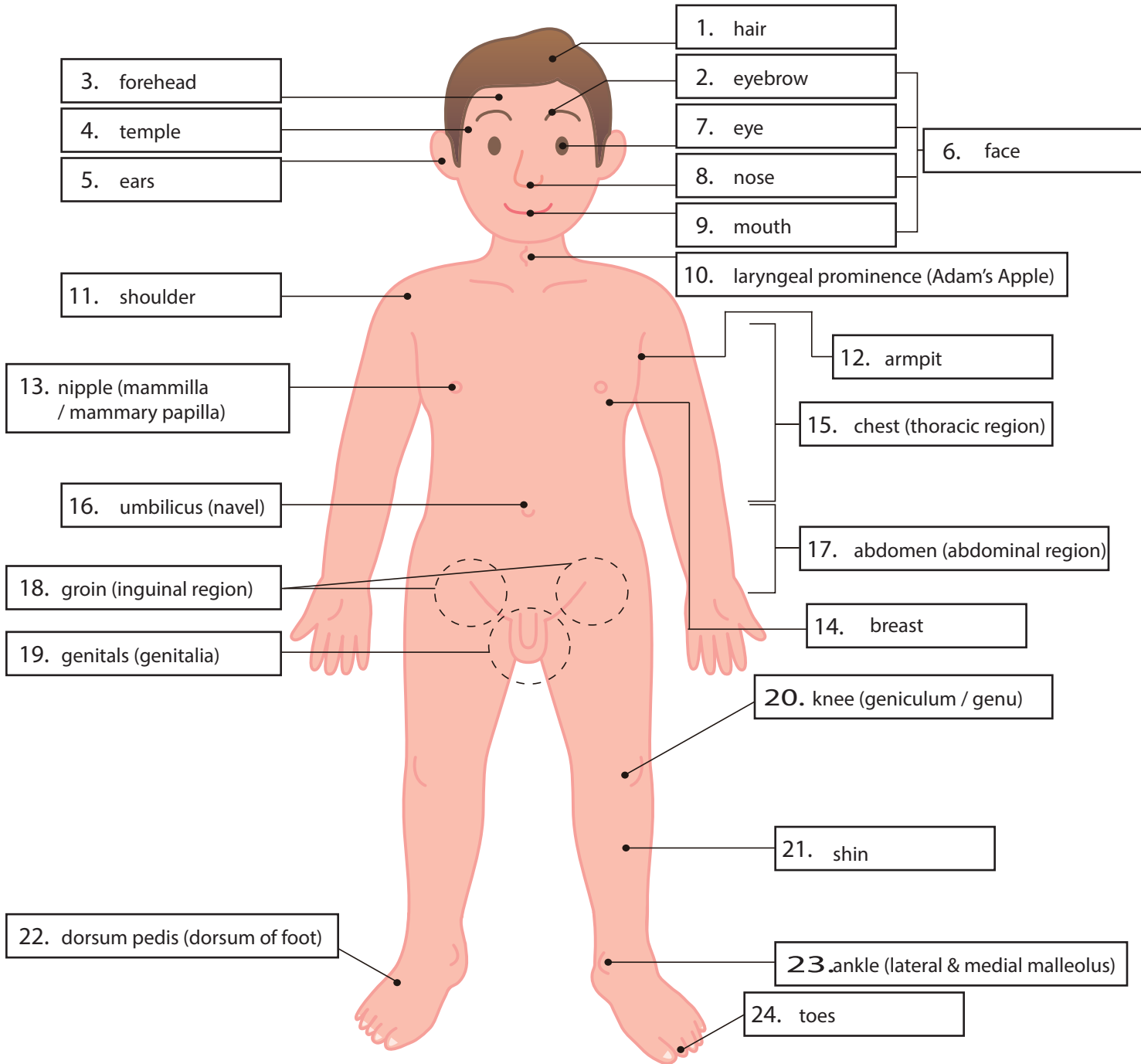


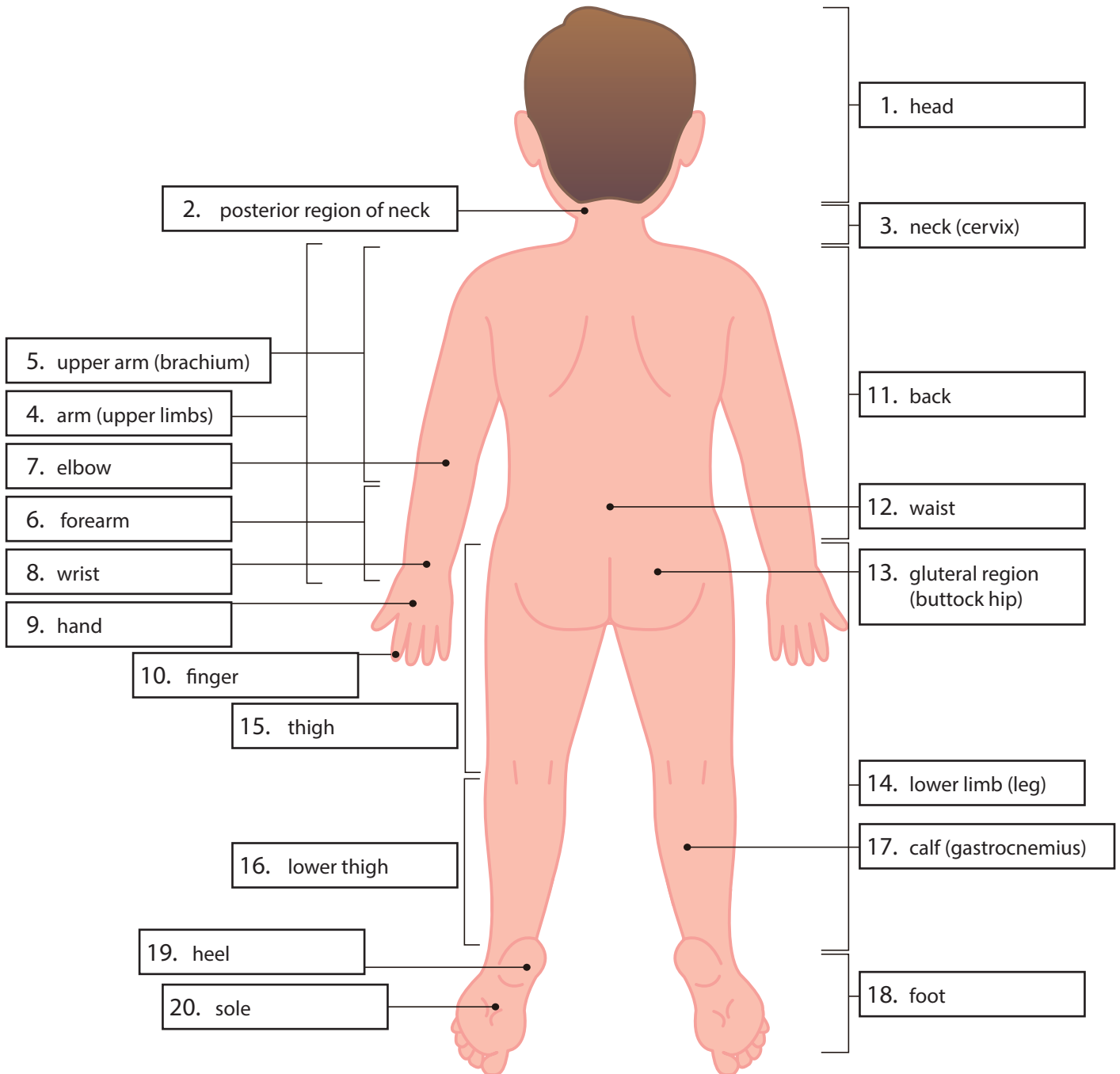
Skeletal System



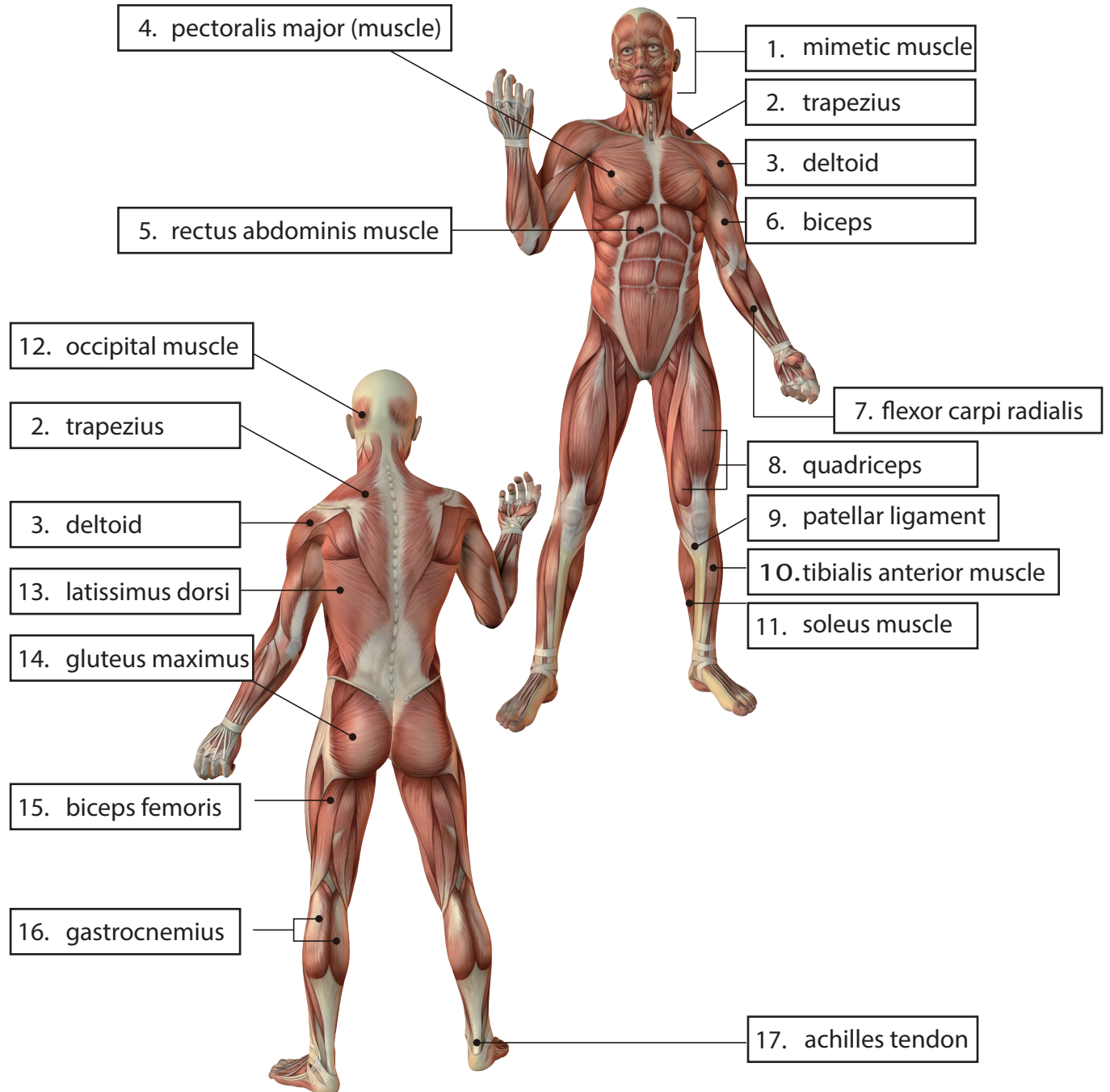
Body Parts (Anterior)



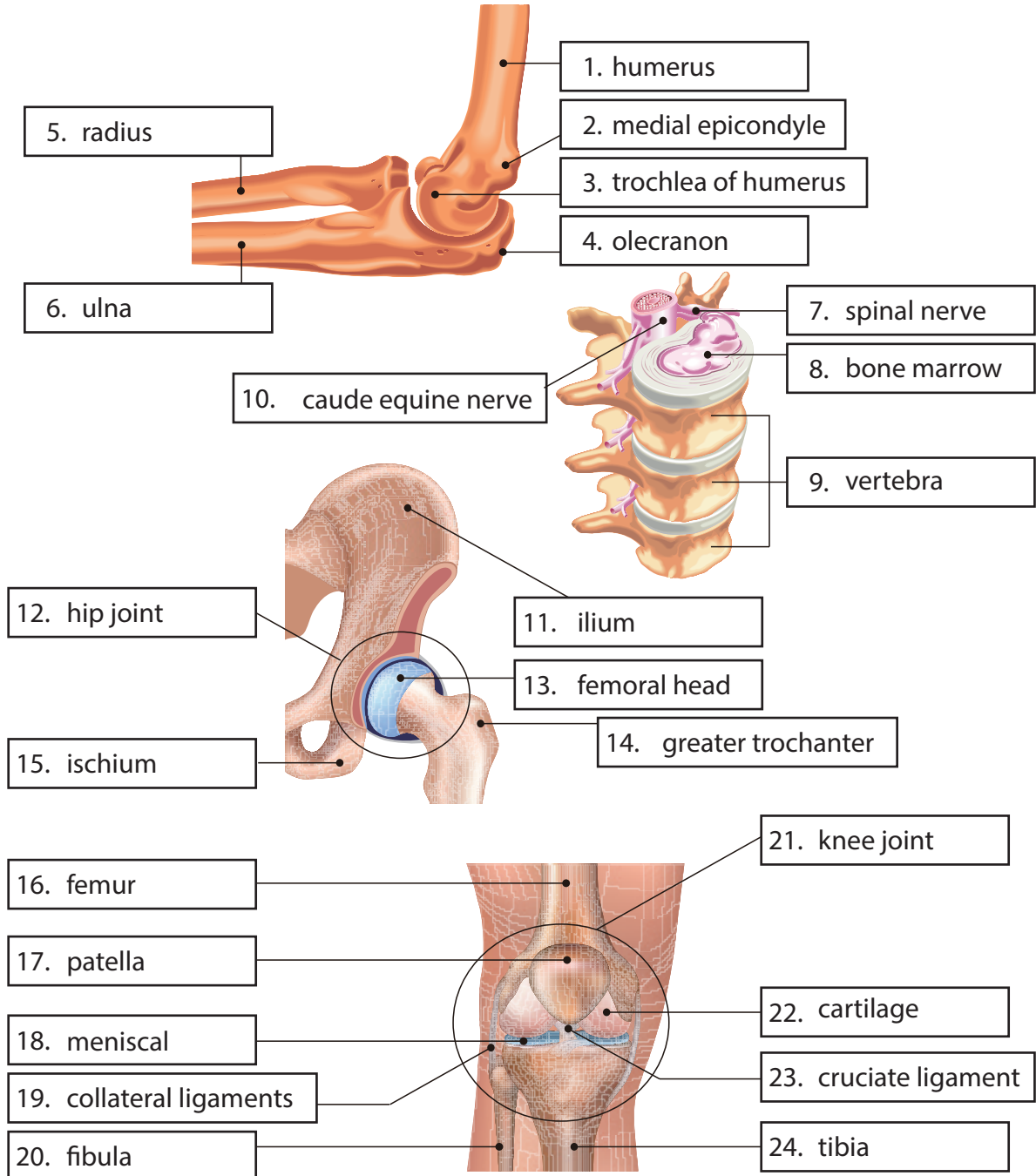
Body Parts (Posterior)



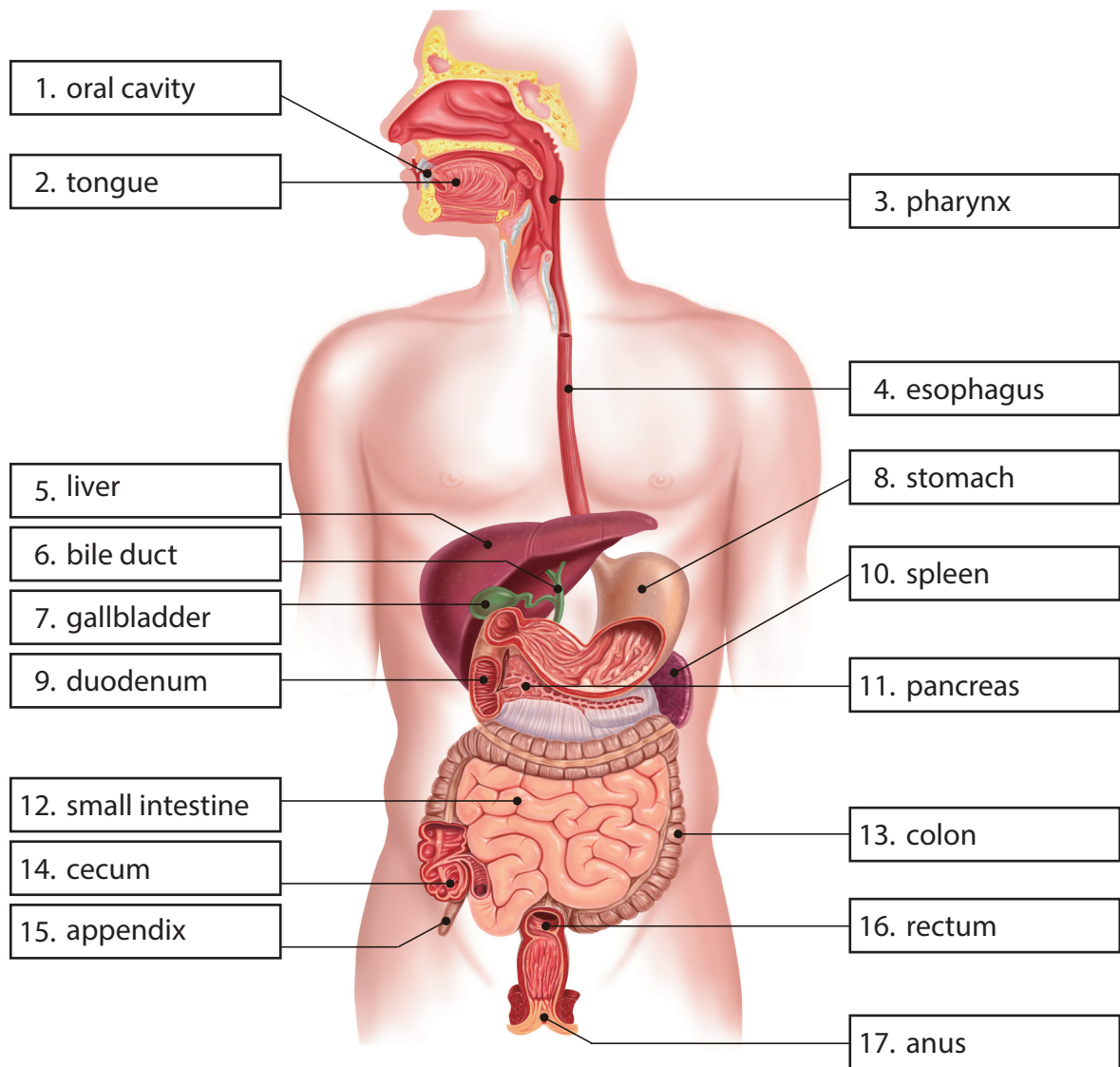
Muscular System



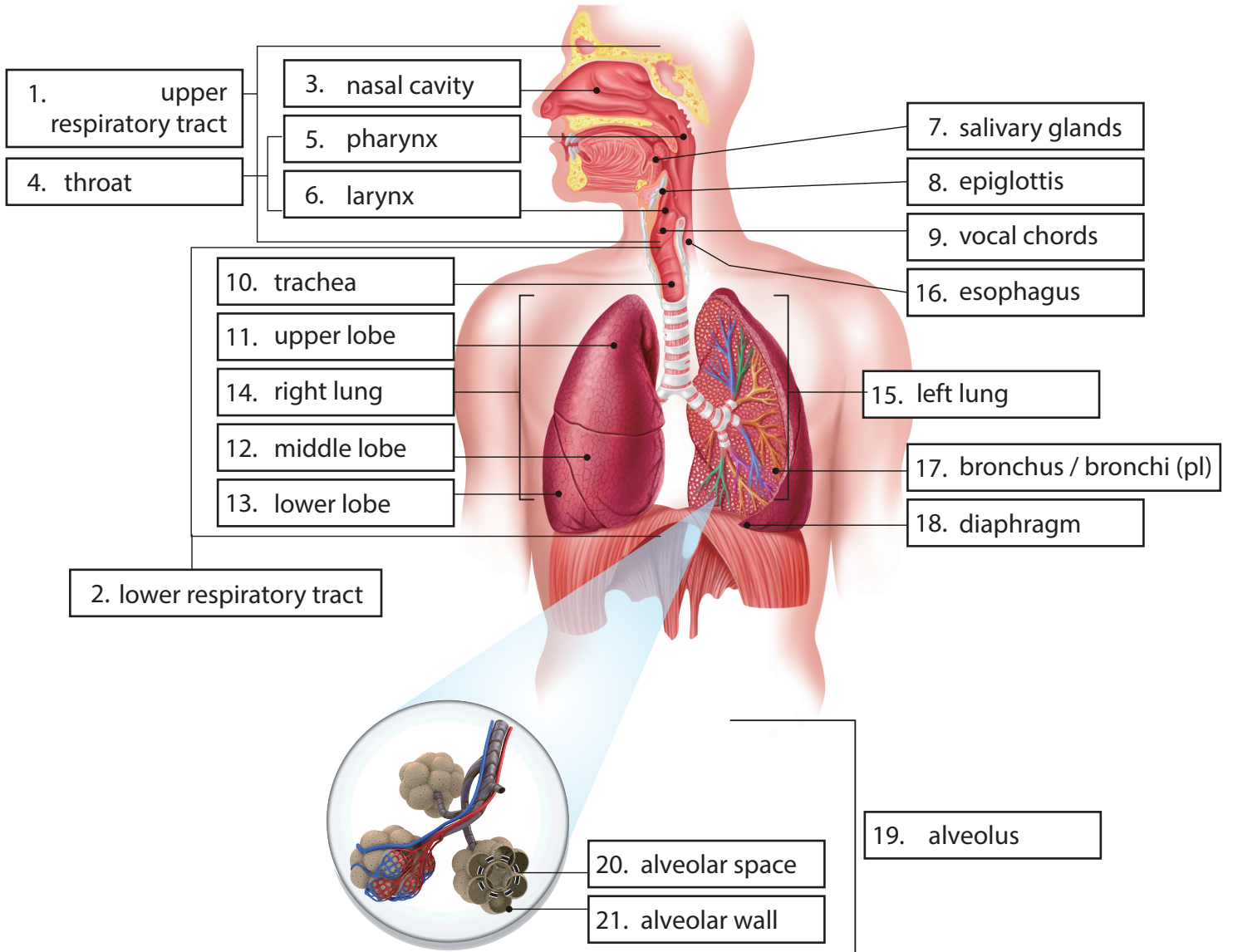
Joint System



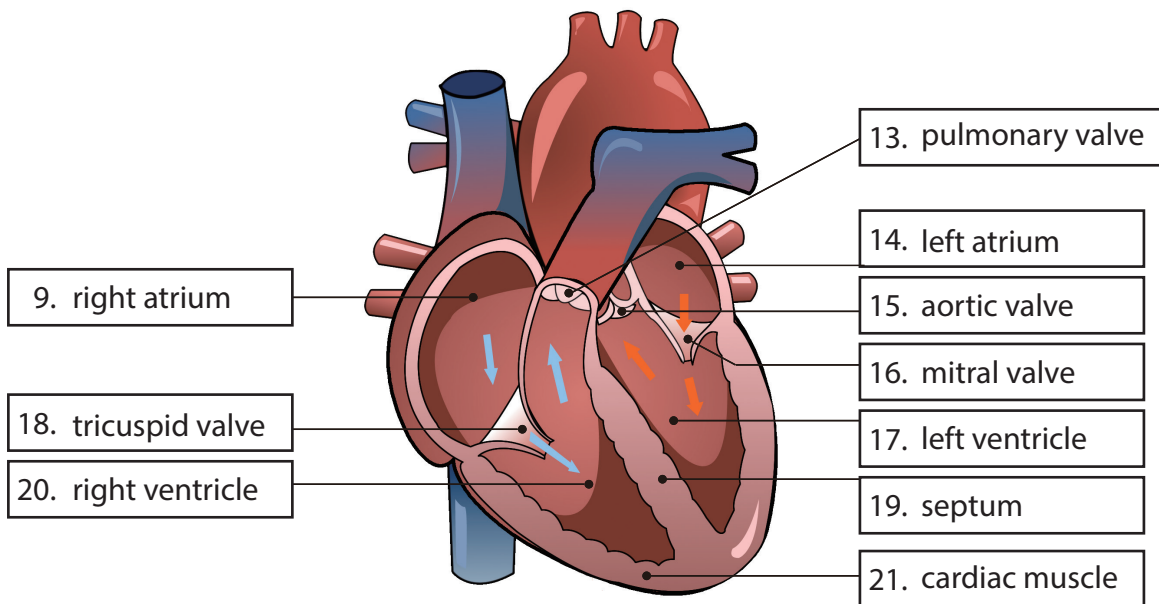
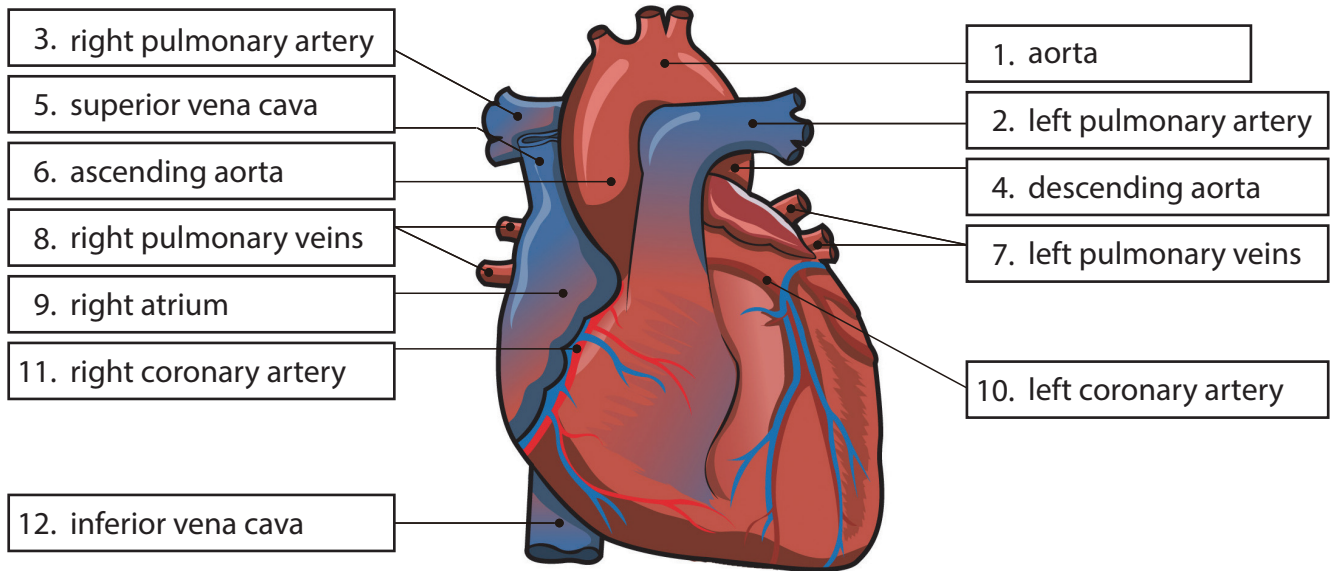
Digestive System



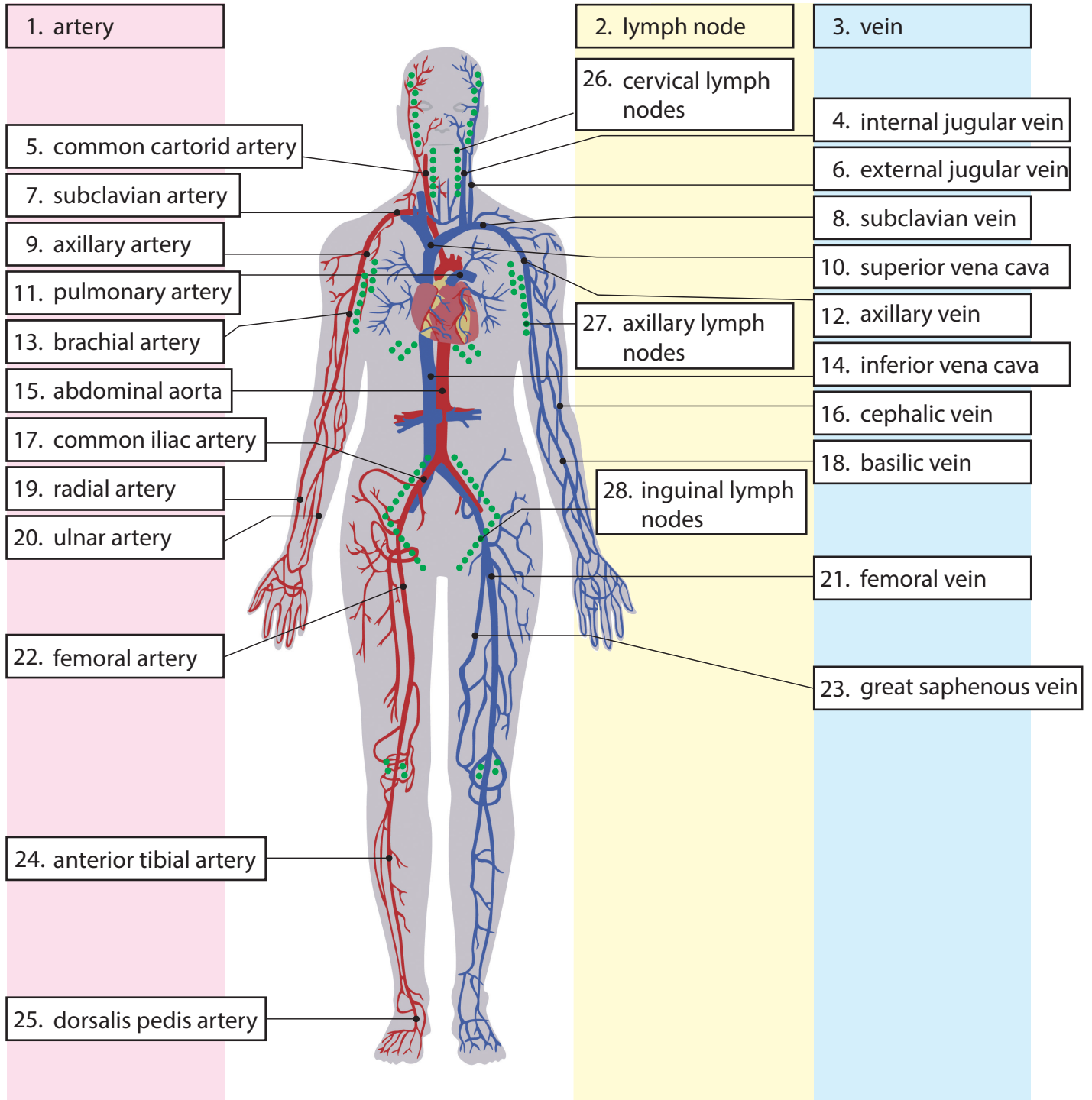
Respiratory System



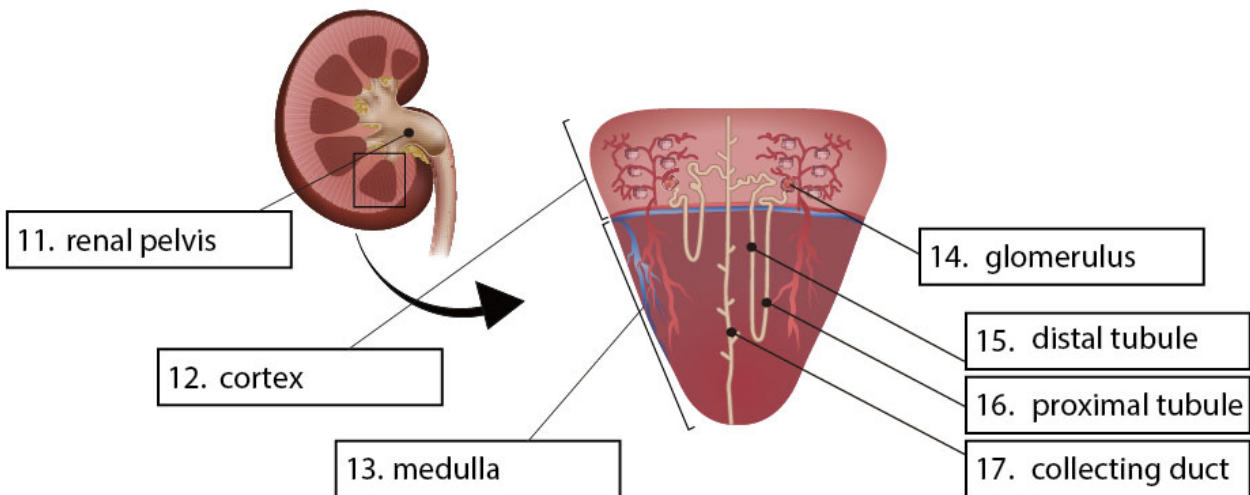
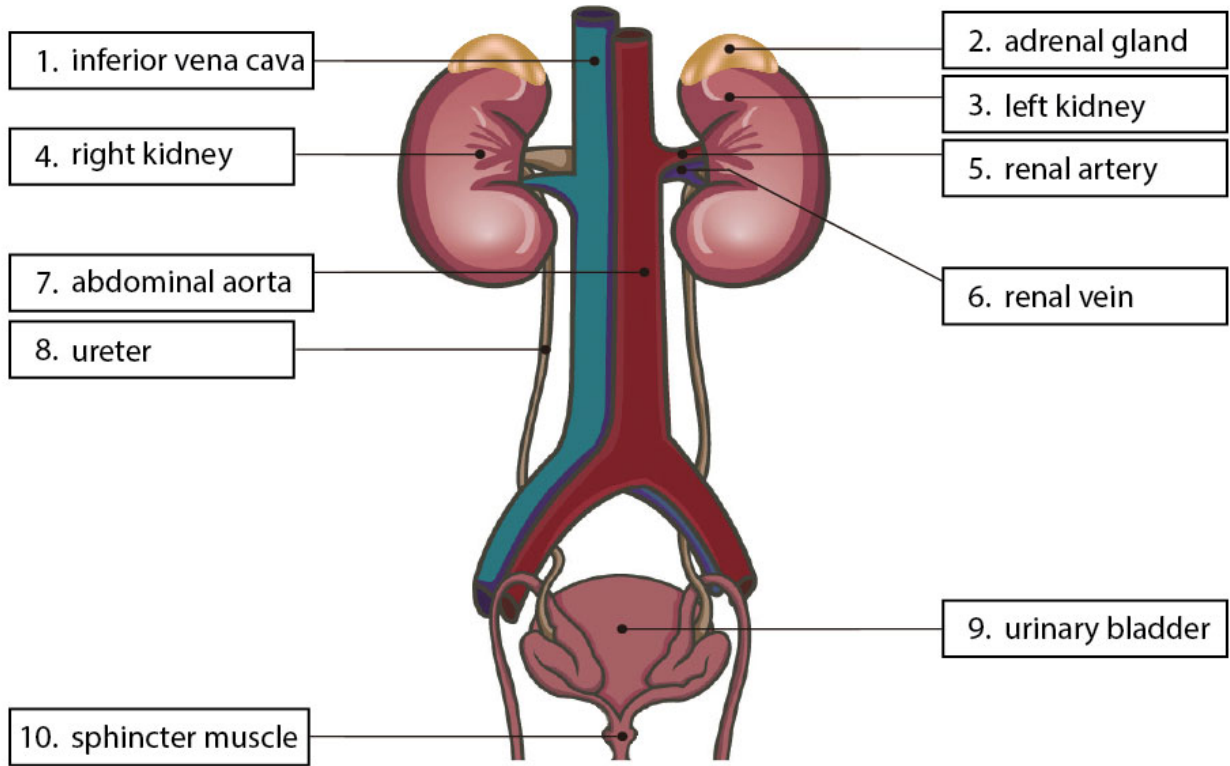
Cardiovascular System - Heart



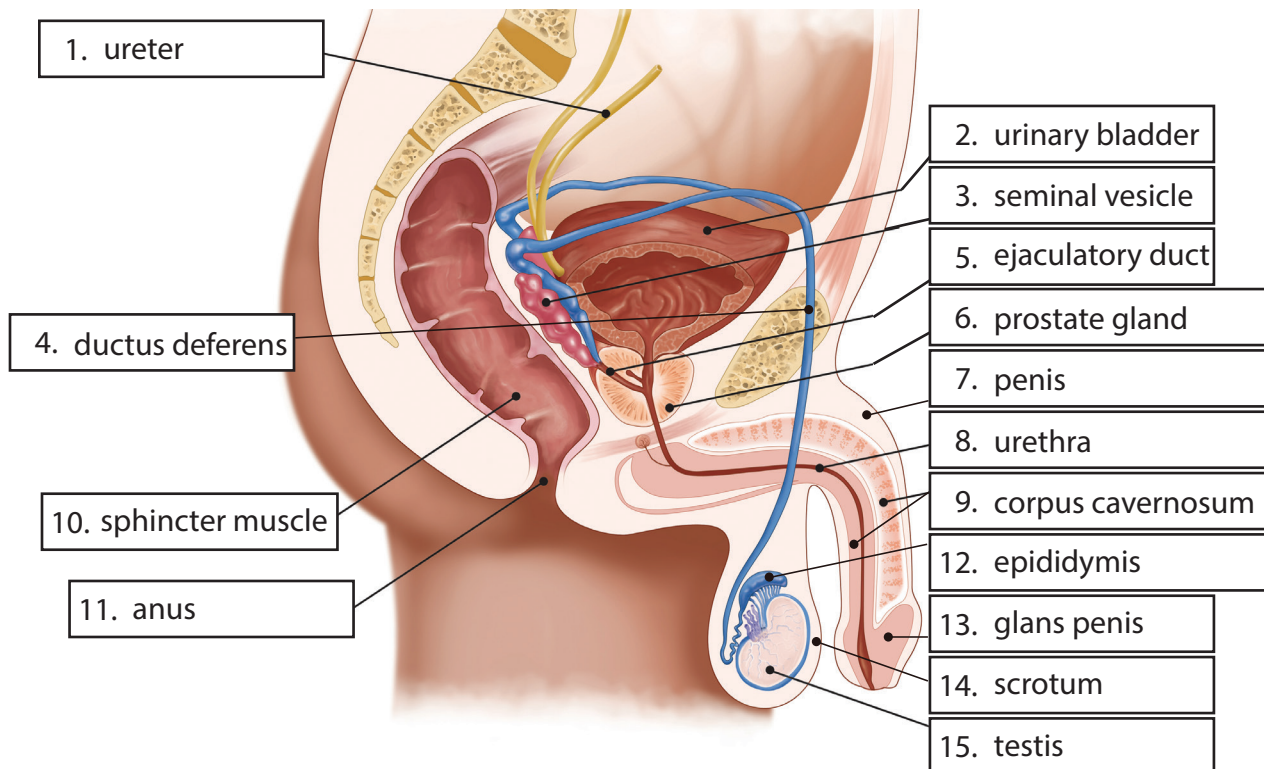
Arteriovenous and Lymphatic System



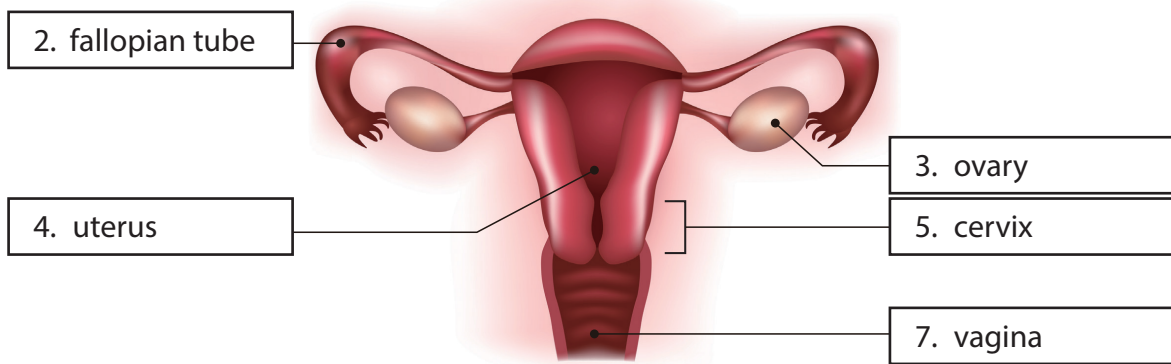
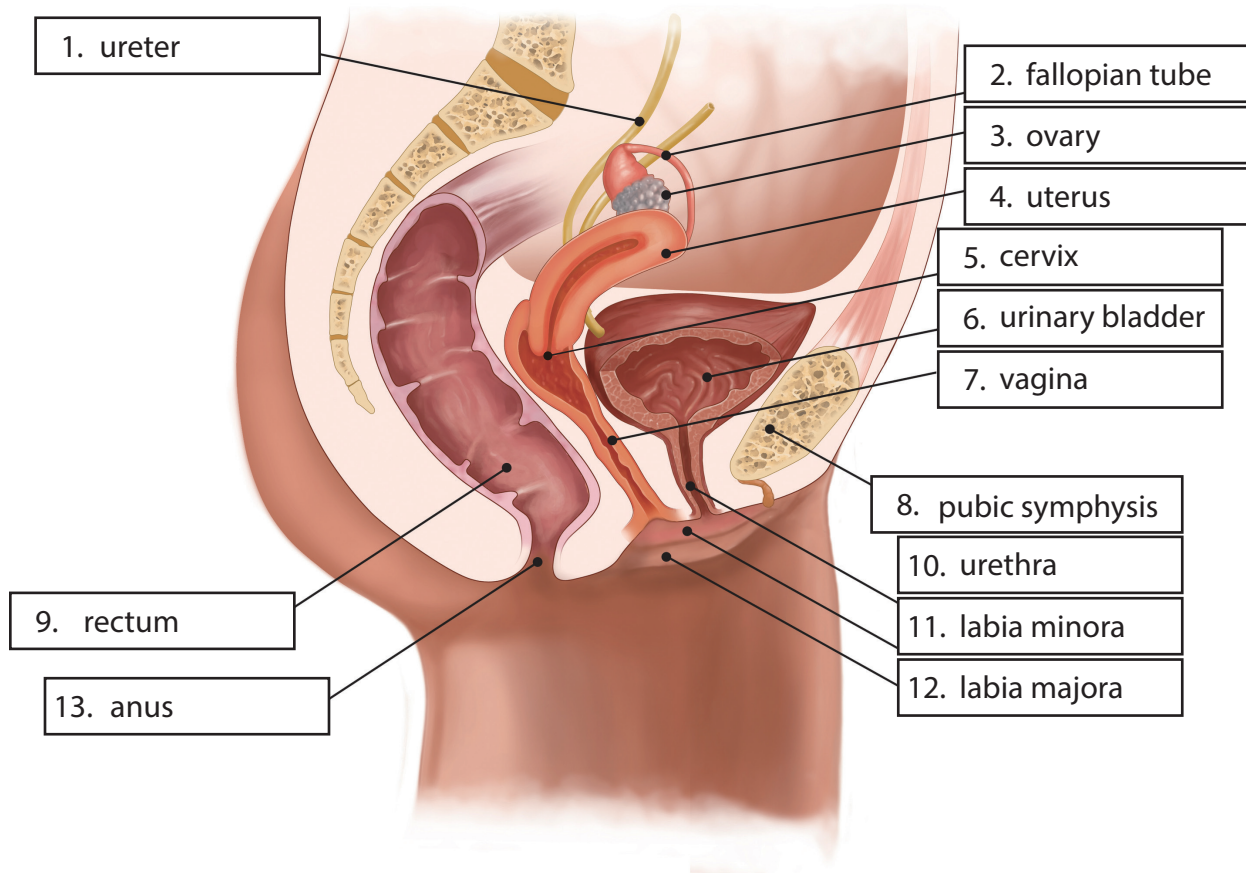
Urinary System



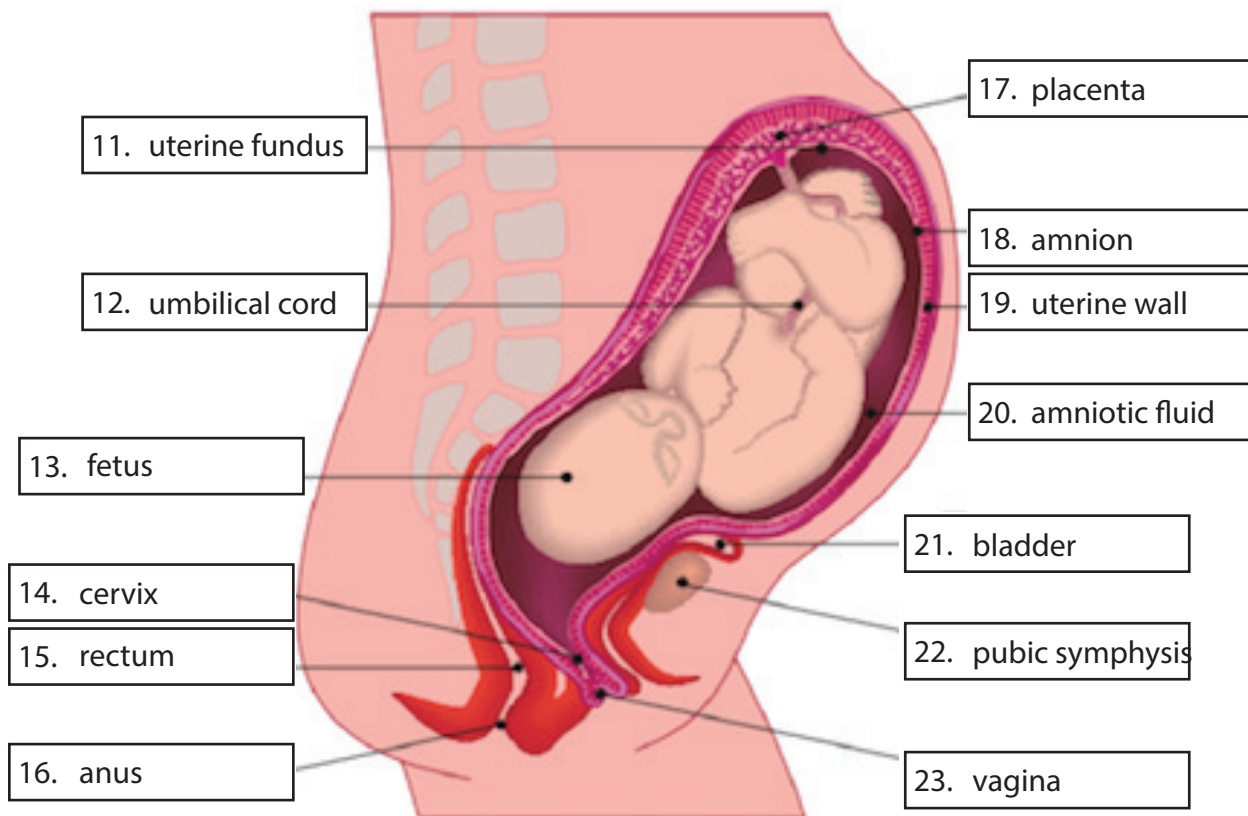
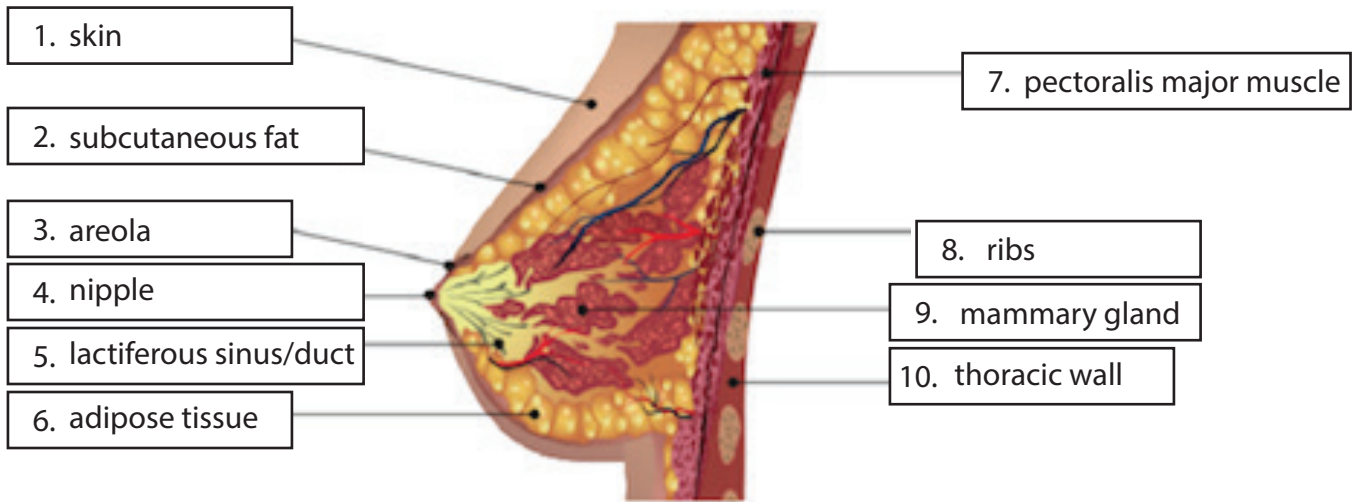
Reproductive System (Male)



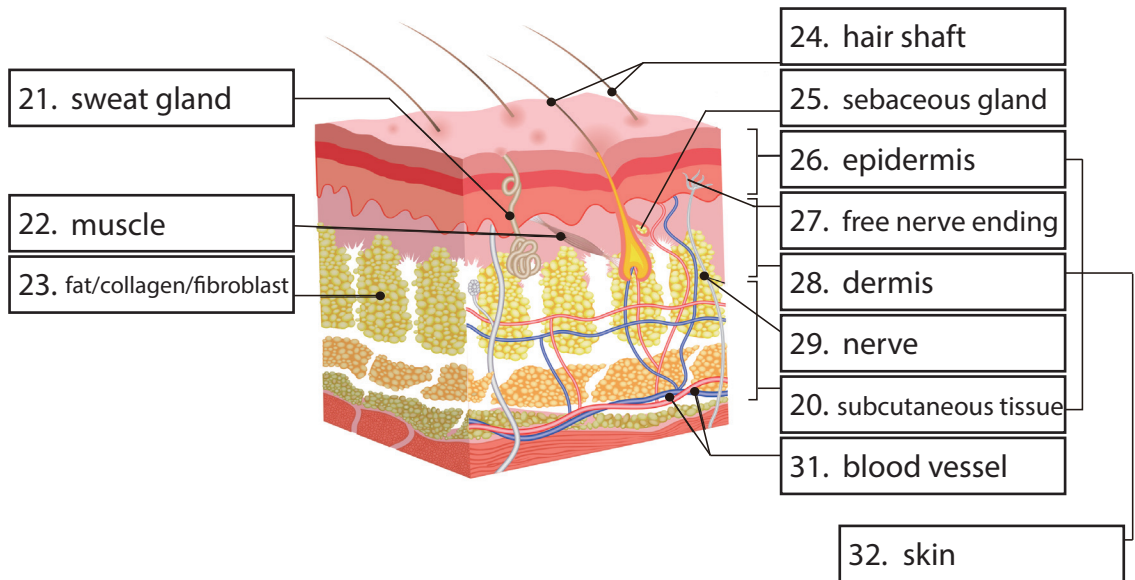
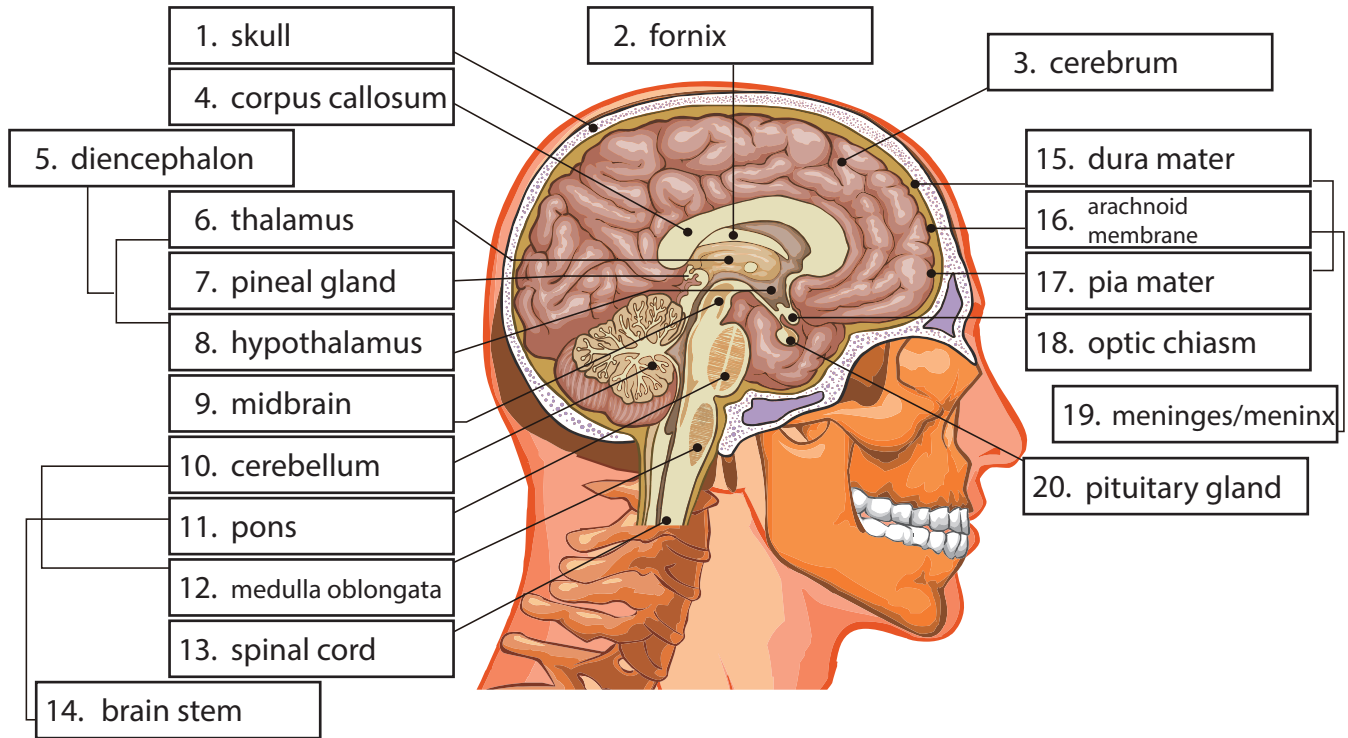
Reproductive System (Female)



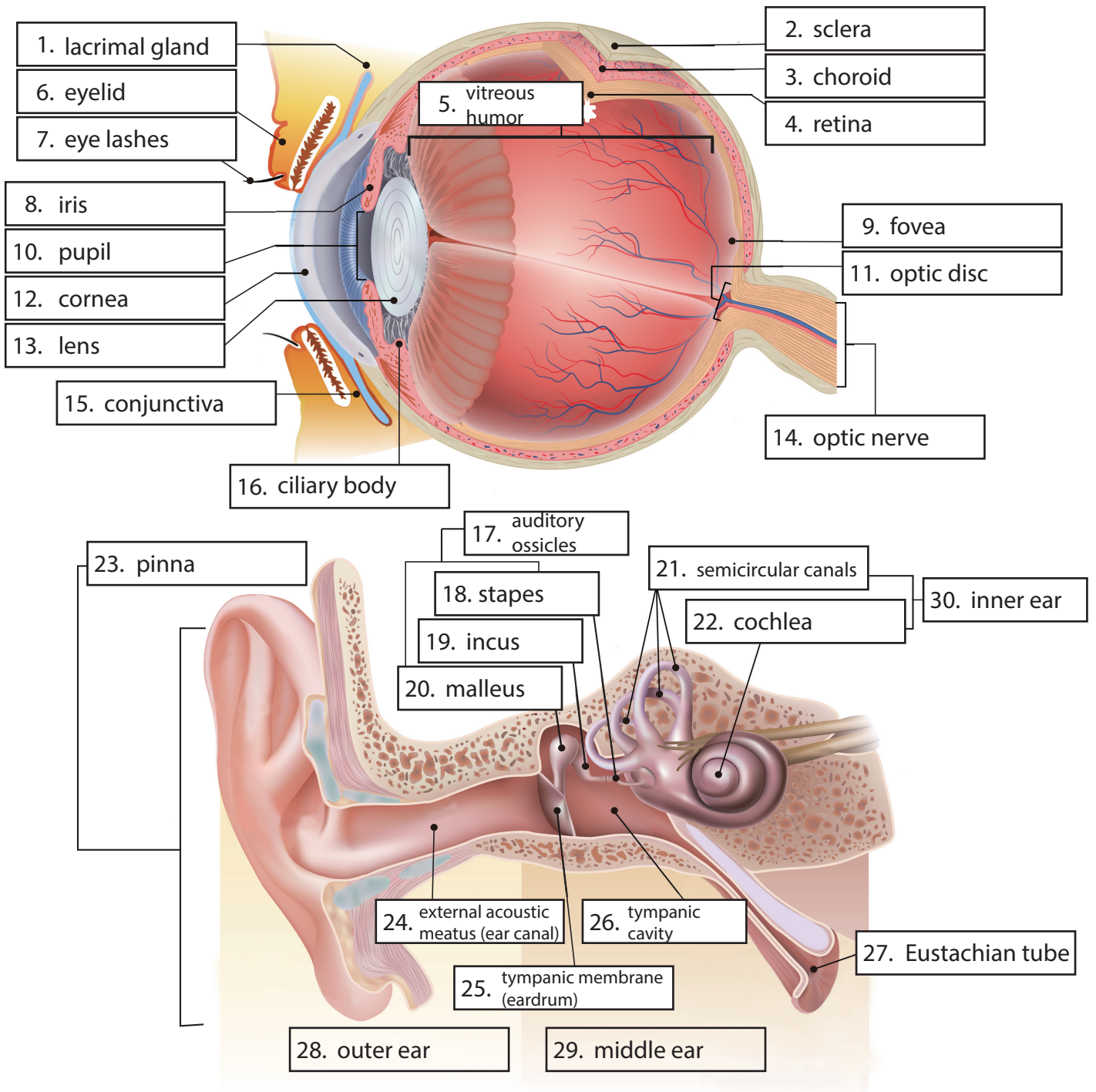
Delivery and Mammary System



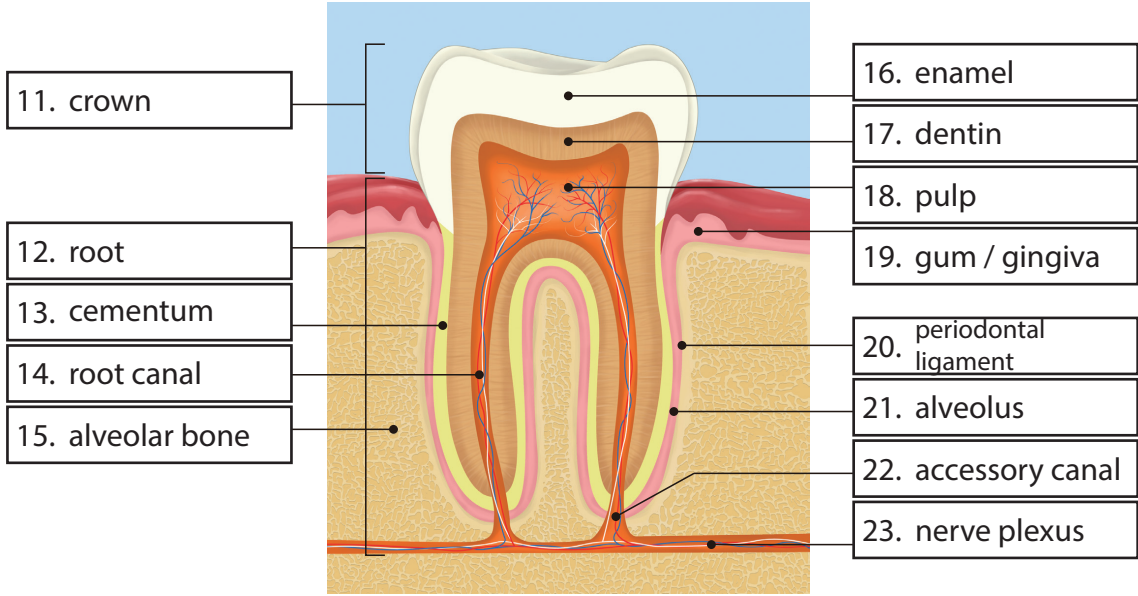
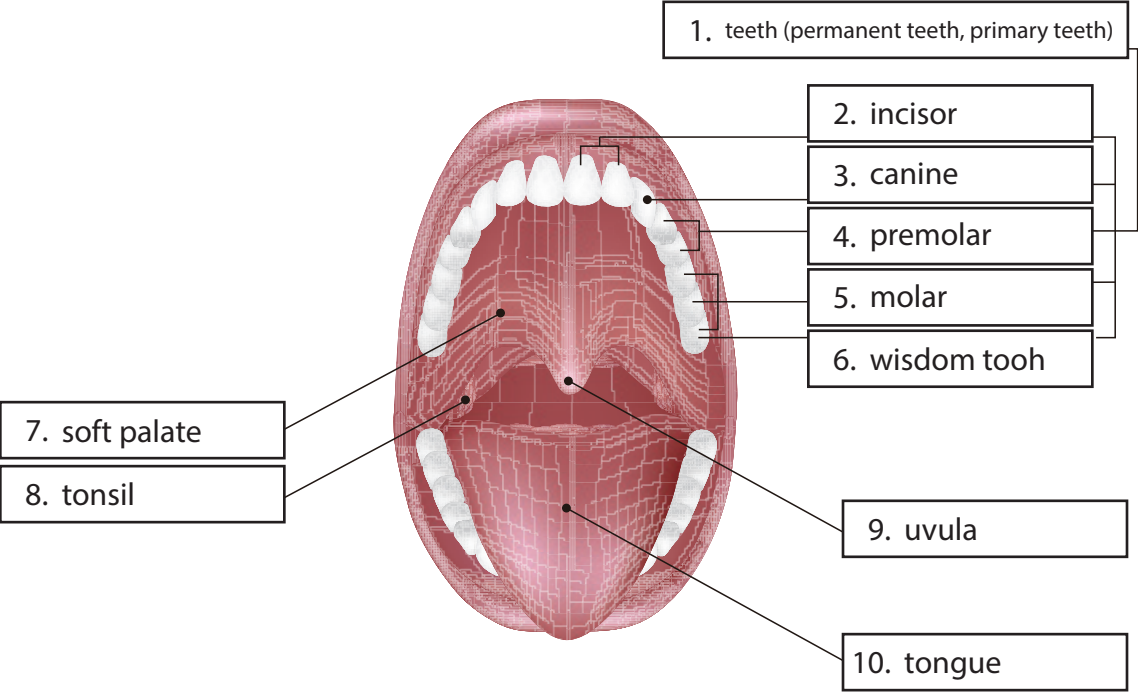
Brain (Central Nervous) and Integumentary System



Ocular and Aural System



Oral and Dental System



Endocrine System

